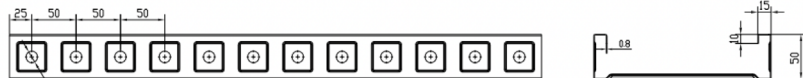
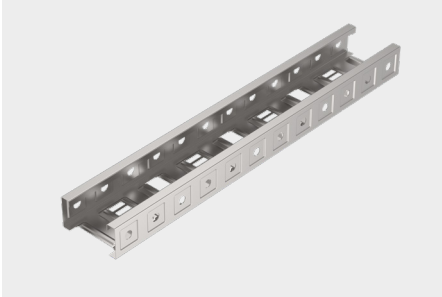


CABLE TRAY SPECIFICATION SHEET

Cable Tray

ZAM* coated steel.

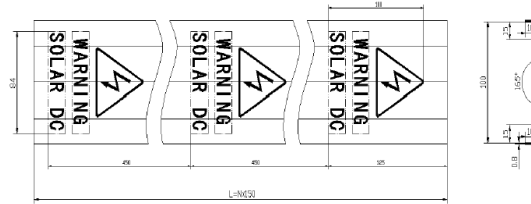


Width	Length	Weight	Part No.	Pack
100mm	3000mm	0.86 kg/m	SLCT100-3000-T	250
200mm	3000mm	1.16 kg/m	SLCT200-3000-T	250
300mm	3000mm	2.44 kg/m	SLCT300-3000-T	250

*ZAM (zinc, aluminium, magnesium) coated steel.

Peak Tray Lid

ZAM* coated steel.

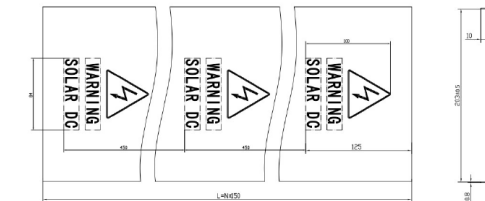
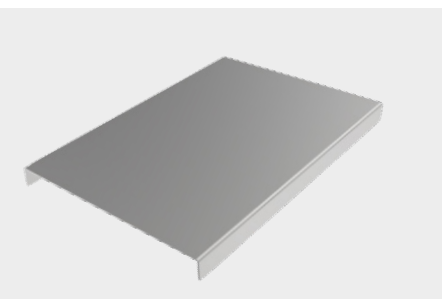


Width	Length	Weight	Part No.	Pack
100mm	3000mm	0.86 kg/m	SLCT100-3000-PC	250
200mm	3000mm	1.16 kg/m	SLCT200-3000-PC	250
300mm	3000mm	2.03 kg/m	SLCT300-3000-PC	250

*ZAM (zinc, aluminium, magnesium) coated steel.

Flat Tray Lid

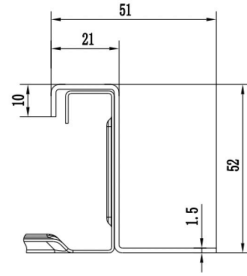
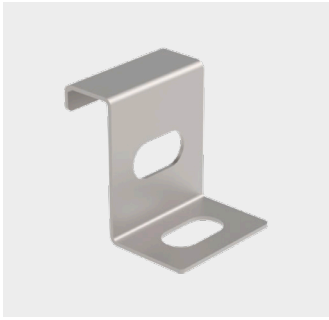
ZAM* coated steel.



Width	Length	Weight	Part No.	Pack
100mm	3000mm	0.86 kg/m	SLCT100-3000-FC	250
200mm	3000mm	1.16 kg/m	SLCT200-3000-FC	250
300mm	3000mm	1.4 kg/m	SLCT300-3000-FC	250

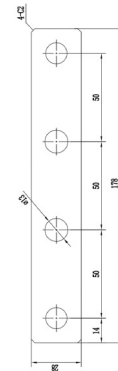
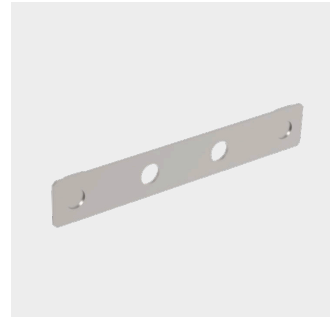
*ZAM (zinc, aluminium, magnesium) coated steel.

Anchor Clamp



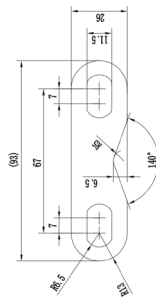
Weight	Part No.	Pack Qty
0.05kg	SLCT-AC	TBA

CT Extender



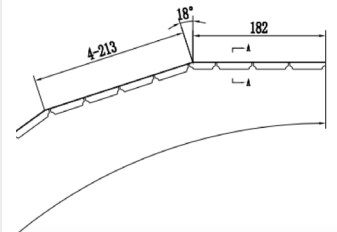
Weight	Part No.	Pack Qty
0.077kg	SLCT-EX	TBA

Joint Link



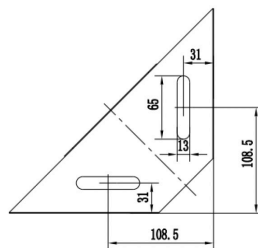
Weight	Part No.	Pack Qty
0.02kg	SLCT-JL	250

Pivot Plate



Weight	Part No.	Pack Qty
0.45kg	SLCT-PP	TBA

Intersect Bracket



Weight	Part No.	Pack Qty
0.202	SLCT-IB	TBA

T Peak Lid



Weight	Part No.	Pack Qty
0.45kg	SLCT-PL	TBA

